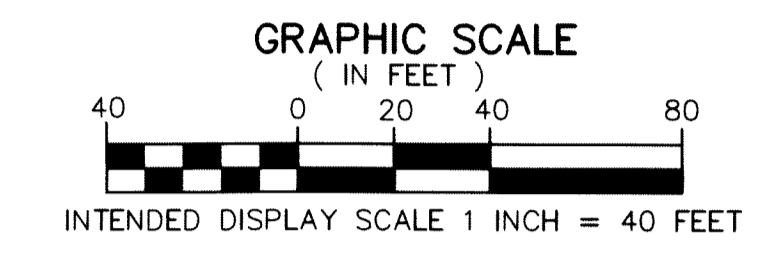
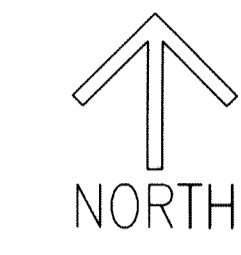


THIS INSTRUMENT PREPARED BY  
 DAVID P. LINDLEY  
 OF  
**CAULFIELD and WHEELER, INC.**  
 SURVEYORS - ENGINEERS - PLANNERS  
 7900 GLADES ROAD, SUITE 100  
 BOCA RATON, FLORIDA 33434 - (561)392-1991  
 CERTIFICATE OF AUTHORIZATION NO. LB3591

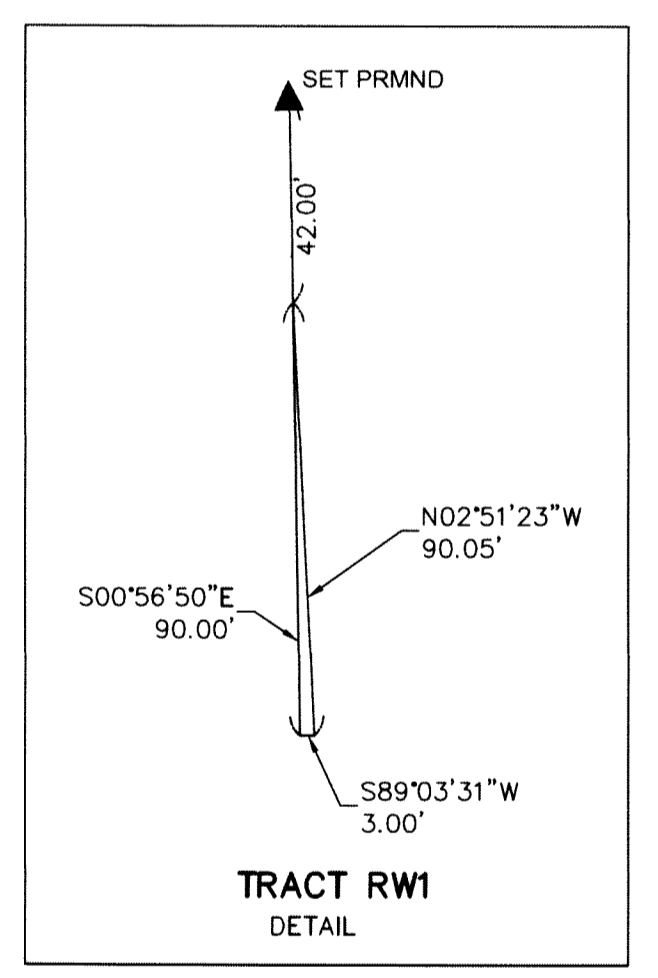
75

**SHEET 2 OF 2**



# A1 INDUSTRIAL PARK

BEING A REPLAT OF A PORTION OF TRACT 16, BLOCK 4,  
 PALM BEACH FARMS CO. PLAT NO. 3, AS RECORDED IN PLAT BOOK 2,  
 PAGES 45 THROUGH 54 OF THE PUBLIC RECORDS OF PALM BEACH COUNTY,  
 FLORIDA, LYING IN SECTION 28, TOWNSHIP 43 SOUTH, RANGE 42 EAST,  
 PALM BEACH COUNTY, FLORIDA



- LEGEND/ABBREVIATIONS**
- ⊖ - CENTERLINE
  - E - EASTING (WHEN USED WITH COORDINATES)
  - IRC - DENOTES 5/8 INCH IRON ROD AND CAP LB3591
  - LB - LICENSED BUSINESS
  - N - NORTHING (WHEN USED WITH COORDINATES)
  - O.R.B. - OFFICIAL RECORD BOOK
  - UE - UTILITY EASEMENT
  - PRM - DENOTES PERMANENT REFERENCE MONUMENT 4" x 4" x 24" CONCRETE MONUMENT WITH ALUMINUM DISK STAMPED "C&W PRM LB3591"
  - - DENOTES NAIL AND DISK
  - △ - DENOTES HORIZONTAL CONTROL POINT
  - ▲ PRMND - DENOTES PERMANENT REFERENCE MONUMENT SET NAIL AND DISK STAMPED "PRM" LB 3591

**NOTES**  
**COORDINATES, BEARINGS AND DISTANCES**

COORDINATES SHOWN ARE GRID  
 DATUM = NAD 83 (90 ADJUSTMENT)  
 ZONE = FLORIDA EAST  
 LINEAR UNIT = US SURVEY FEET  
 COORDINATE SYSTEM 1983 STATE PLANE  
 TRANSVERSE MERCATOR PROJECTION

ALL DISTANCES ARE GROUND UNLESS OTHERWISE NOTED  
 SCALE FACTOR = 1.00002781  
 GROUND DISTANCE X SCALE FACTOR = GRID DISTANCE  
 BEARINGS AS SHOWN HEREON ARE GRID DATUM,  
 NAD 83 (90 ADJUSTMENT), FLORIDA EAST ZONE.

